



# **RAMO INDUSTRIES PTE LTD**

*Company Commitment to Environmental Responsibility*

*Health & Safety, and Quality Excellence*



## Contents

Introduction .....	3
Sustainable Construction .....	3
Sustainability Approach at RAMO INDUSTRIES PTE LTD.....	4
Corporate and Sustainability Governance .....	5
Workplace Safety & Health Commitment .....	6
Environmental Management Practices.....	6
Quality Commitment .....	7
Our Commitment to Sustainable Construction .....	7
Conclusion.....	9

This document contains proprietary and confidential information of RAMO INDUSTRIES PTE LTD and is intended solely for the use of the authorized recipient(s). No part of this document may be reproduced, copied, distributed, transmitted, stored in a retrieval system, digitally duplicated, scanned, modified, or disclosed in any form or by any means, whether electronic, mechanical, photocopying, recording, or otherwise, without the prior written consent of RAMO INDUSTRIES PTE LTD. Unauthorized use, reproduction, or dissemination of this document, in whole or in part, is strictly prohibited and may result in legal action where applicable. This restriction applies to both physical and digital formats, including screenshots, electronic sharing, cloud storage reproduction, artificial intelligence processing, and any other form of replication or redistribution."



## **Introduction**

RAMO INDUSTRIES PTE LTD recognizes that climate change presents both risks and opportunities that can significantly influence business operations, the construction industry, and the broader built environment. As a Singapore-based company providing building construction, upgrading works, and industrial engineering services, the Company acknowledges its responsibility to contribute toward sustainable development and support climate resilience through responsible business practices.

This Climate-Related Disclosure Report outlines RAMO INDUSTRIES PTE LTD's approach towards identifying, assessing, and managing climate-related risks and opportunities that may affect its operations, projects, and stakeholders. The Company remains committed to integrating sustainability considerations into its business strategies and operational practices while supporting environmental stewardship and long-term value creation.

RAMO INDUSTRIES PTE LTD continues to promote responsible resource management, workplace safety, regulatory compliance, and sustainable construction practices across its operations. Through continuous improvement and enhanced awareness of climate-related matters, the Company aims to strengthen resilience, improve operational efficiency, and reduce environmental impacts where reasonably practicable.

This report demonstrates the Company's commitment to transparency and ongoing efforts in addressing climate-related matters in line with recognized sustainability and climate reporting principles. RAMO INDUSTRIES PTE LTD will continue to evaluate and improve its climate-related practices to support a more sustainable future for its stakeholders and the communities it serves.

## **Sustainable Construction**

Sustainable construction refers to the planning, design, construction, operation, and maintenance of buildings and infrastructure in a manner that minimizes environmental impact and promotes efficient use of resources throughout the project life cycle. This approach supports climate resilience, responsible resource consumption, reduction of environmental impacts, and long-term sustainability within the construction industry.

RAMO INDUSTRIES PTE LTD recognizes that the construction sector plays an important role in addressing climate-related challenges through the adoption of sustainable practices and responsible project delivery. As a company involved in general building construction, major upgrading works, and industrial engineering



services, the Company acknowledges the need to incorporate sustainability considerations into its operational activities and project execution processes.

The Company remains committed to implementing practical construction approaches that promote efficient use of materials, reduce unnecessary wastage, improve operational efficiency, and minimize adverse environmental impacts where reasonably practicable. Through responsible planning and execution, RAMO INDUSTRIES PTE LTD seeks to contribute to reducing environmental footprints while supporting sustainable development objectives.

In Singapore, sustainable construction remains particularly significant due to limited land resources, urban development demands, and reliance on imported construction materials. Responsible construction practices can contribute towards reducing waste generation, optimizing resource utilization, and supporting broader environmental and climate-related goals. RAMO INDUSTRIES PTE LTD supports these objectives through project planning, environmental control measures, efficient resource management, and adherence to applicable environmental and workplace safety requirements.

The Company continuously seeks opportunities to improve construction productivity and operational efficiency through better coordination, improved work processes, and the adoption of suitable technologies where practical. Sustainable construction practices can also contribute to enhanced project quality, improved durability, safer working environments, and long-term environmental benefits.

RAMO INDUSTRIES PTE LTD remains committed to continuous improvement in sustainable construction practices and to integrating environmental responsibility into its operations. The Company will continue to strengthen its efforts towards supporting climate resilience, sustainable development, and responsible business practices for the benefit of its stakeholders and the wider community.

## **Sustainability Approach at RAMO INDUSTRIES PTE LTD**

Sustainability is a key pillar of RAMO INDUSTRIES PTE LTD's commitment to delivering responsible and quality construction and engineering solutions. The Company adopts a proactive approach towards environmental protection, workplace safety, quality management, and operational excellence by implementing effective controls and risk management practices across all business activities.



RAMO INDUSTRIES PTE LTD is committed to conducting its operations in a safe, environmentally responsible, and sustainable manner while meeting the expectations of clients, employees, authorities, and stakeholders. The Company continuously improves its operational processes and construction practices to support long-term sustainable growth and responsible project delivery.

The Company's sustainability approach is aligned with recognised international standards and industry best practices, as demonstrated through the following certifications:

- ISO 14001:2015 – Environmental Management System
- ISO 45001:2018 – Occupational Health & Safety Management System
- ISO 9001:2015 – Quality Management System

In addition, RAMO INDUSTRIES PTE LTD has been recognised under the BCA Green and Gracious Builder Award, reflecting the Company's commitment towards environmentally friendly construction practices, considerate site management, and maintaining a safe and pleasant working environment.

RAMO INDUSTRIES PTE LTD also maintains compliance with applicable regulatory requirements, industry standards, and workplace safety regulations while continuously promoting quality workmanship, environmental sustainability, and responsible construction practices throughout its operations.

## **Corporate and Sustainability Governance**

RAMO INDUSTRIES PTE LTD has established clear responsibilities and accountability within the organization to support effective management, responsible decision-making, and continuous improvement across its operations.

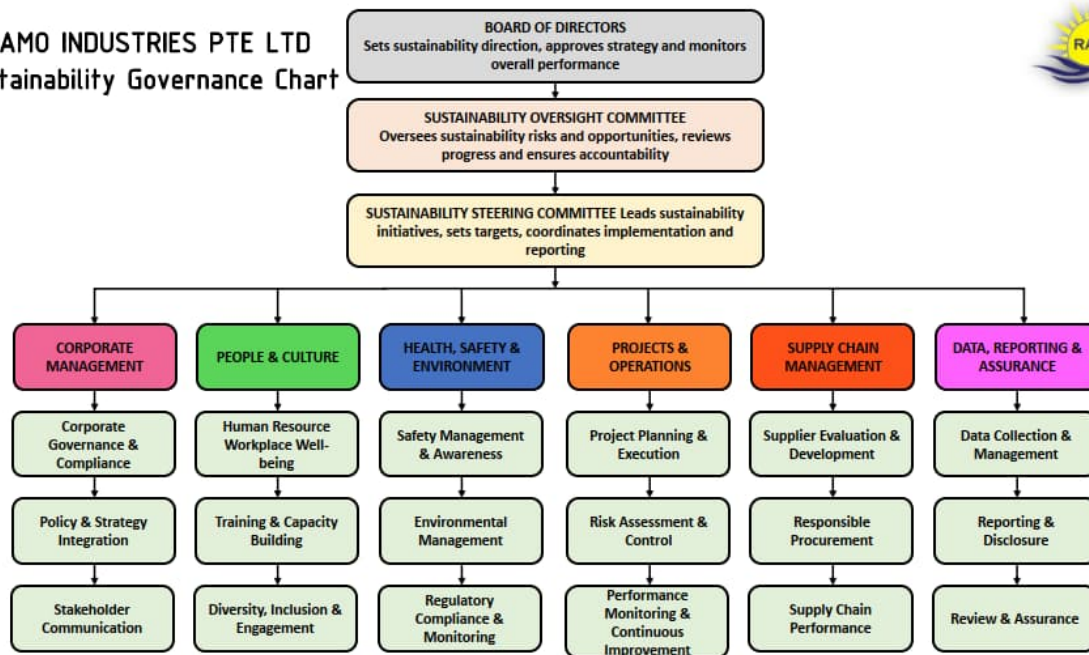
The Company's sustainability initiatives are guided by Management and project teams who work together to implement sustainable business practices, maintain regulatory compliance, and promote environmental, health, safety, and quality standards throughout all business activities.

RAMO INDUSTRIES PTE LTD adopts a structured approach in managing sustainability-related matters, including workplace safety, environmental management, operational risks, quality assurance, and stakeholder engagement. Management regularly reviews operational performance, project risks, safety matters, and environmental practices to ensure alignment with the Company's sustainability goals and business objectives.

Through effective governance and management oversight, RAMO INDUSTRIES PTE LTD continues to strengthen its sustainability framework while supporting responsible business growth and long-term value creation for clients, employees, and stakeholders.



## RAMO INDUSTRIES PTE LTD Sustainability Governance Chart



## Workplace Safety & Health Commitment

RAMO INDUSTRIES PTE LTD is committed to maintaining a safe and healthy working environment for all employees, subcontractors, and stakeholders. Workplace safety remains a core priority across all project activities and operational processes.

The Company continuously promotes workplace safety awareness through regular training, toolbox meetings, site inspections, risk assessments, and compliance with Workplace Safety and Health regulations. Employees and workers are encouraged to follow safe work practices and actively participate in maintaining a safe working environment.

RAMO INDUSTRIES PTE LTD strives to prevent workplace incidents and continuously improve its health and safety performance through effective planning, monitoring, and implementation of safety management systems.

## Environmental Management Practices

RAMO INDUSTRIES PTE LTD is committed to minimizing the environmental impact of its operations through responsible construction practices and environmental management measures.

The Company implements various environmental control measures, including:

- Proper waste segregation and disposal practices
- Noise and dust control measures at worksites
- Reduction of material wastage



- Efficient use of energy and water resources
- Regular environmental inspections and monitoring
- Compliance with environmental regulations and authority requirements

RAMO INDUSTRIES PTE LTD continuously seeks opportunities to improve environmental performance and promote sustainable construction practices across all projects.

## **Quality Commitment**

RAMO INDUSTRIES PTE LTD is committed to delivering quality workmanship and reliable construction solutions that meet client expectations, regulatory requirements, and project specifications.

The Company maintains effective quality management systems and continuously improves its operational processes to ensure consistency, efficiency, and high standards in project delivery. Regular inspections, monitoring, and quality control measures are implemented throughout all stages of construction works.

RAMO INDUSTRIES PTE LTD remains dedicated to achieving customer satisfaction through professionalism, timely project execution, and continuous improvement.

## **Our Commitment to Sustainable Construction**

RAMO INDUSTRIES PTE LTD is committed to supporting sustainable and low-carbon construction practices by adopting environmentally responsible technologies and improving operational efficiency across its projects. The Company recognises the importance of reducing carbon emissions, minimising environmental impact, and promoting cleaner construction processes within the industry.

As part of its sustainability initiatives, RAMO INDUSTRIES PTE LTD plans to implement electrically powered construction support equipment to reduce reliance on conventional diesel-powered machinery during material handling and logistics operations.

The proposed use of electric flat cars and electric forklifts will support daily site activities such as internal transportation, material loading, unloading, and stacking works. These electrically powered equipment produce zero direct on-site emissions, reduce fuel consumption, lower noise levels, and improve air quality within construction sites.

The Company intends to deploy these equipment during project operations where practical, supported by proper charging management and energy-efficient operating practices. Priority will be given to high-frequency material movement areas to maximize operational efficiency and environmental benefits.



Through these initiatives, RAMO INDUSTRIES PTE LTD aims to achieve meaningful environmental and operational improvements while supporting broader sustainability and climate-related objectives across its construction and engineering activities. The Company recognizes that responsible resource management, adoption of cleaner technologies, and continuous enhancement of construction practices can contribute positively toward reducing environmental impacts and strengthening long-term resilience. Accordingly, RAMO INDUSTRIES PTE LTD aims to:

- Reduce diesel fuel consumption and lower greenhouse gas emissions by promoting efficient use of machinery and equipment, minimizing unnecessary idling, optimizing construction processes, and progressively exploring cleaner alternatives where practical. The Company also encourages the use of energy-efficient equipment and cleaner transportation options to reduce reliance on conventional fossil fuel-powered vehicles.
- Promote the adoption and use of electric vehicles (EVs) where operationally feasible, including company transportation and support vehicles, as part of efforts to reduce fuel consumption, lower carbon emissions, and support the transition toward cleaner mobility solutions within the construction sector. The Company recognizes that EV adoption can contribute to long-term reductions in operational emissions and environmental impact.
- Improve energy efficiency and optimize resource utilization through enhanced project planning, efficient deployment of manpower and equipment, and implementation of practical measures that support reduced energy consumption across construction activities.
- Explore and promote the use of renewable energy solutions, including solar energy systems, where practical and operationally suitable. The use of solar panels at offices, temporary facilities, or applicable project locations may contribute towards reducing dependence on conventional electricity sources and lowering the Company's overall environmental footprint.
- Minimize environmental impacts at worksites, including noise emissions, dust generation, air pollution, and unnecessary resource wastage, through proper environmental controls, responsible site management practices, and compliance with applicable environmental requirements and standards.
- Strengthen recycling and waste management practices by promoting proper segregation, reuse, and recycling of construction materials and general waste where feasible. The Company aims to improve recycling effectiveness by encouraging responsible disposal practices, reducing landfill waste generation, and identifying opportunities for material recovery and reuse within its operations.
- Promote cleaner, safer, and more sustainable working environments by maintaining workplace practices that prioritize worker well-being, environmental awareness, operational efficiency, and compliance with workplace health, safety, and environmental standards.
- Support broader sustainability and decarbonization efforts within the construction industry through implementation of practical sustainable construction measures and continuous evaluation of opportunities to reduce environmental impacts and carbon intensity over time.



- Strengthen environmental responsibility and climate resilience through continuous improvement initiatives, increased awareness of climate-related matters, and integration of sustainability considerations into operational decision-making and project execution processes.
- Contribute towards long-term sustainable development objectives by balancing operational requirements with environmental stewardship and creating long-term value for clients, stakeholders, and the wider community.

Through ongoing review and enhancement of its sustainability initiatives, RAMO INDUSTRIES PTE LTD remains committed to supporting a more environmentally responsible, resource-efficient, and climate-conscious construction industry. RAMO INDUSTRIES PTE LTD remains committed to continuously improving its sustainability performance by exploring innovative and environmentally responsible construction solutions that contribute positively to the built environment and future development needs.

## Conclusion

RAMO INDUSTRIES PTE LTD remains committed to conducting its business operations in a responsible, safe, and sustainable manner while delivering quality construction and engineering solutions that support both client requirements and broader environmental objectives. The Company recognizes that climate change presents evolving challenges and opportunities that require continuous adaptation, responsible decision-making, and long-term commitment towards sustainable business practices.

As part of its climate-related initiatives, RAMO INDUSTRIES PTE LTD continues to strengthen its efforts in improving environmental performance through sustainable construction practices, efficient resource utilization, responsible waste management, and compliance with applicable environmental, health, safety, and regulatory requirements. The Company acknowledges the importance of integrating sustainability considerations into its operational activities and project execution processes to reduce environmental impacts and enhance resilience.

Through initiatives such as improving energy efficiency, reducing diesel consumption and greenhouse gas emissions, promoting effective recycling practices, exploring the adoption of electric vehicles (EVs), and considering the use of renewable energy solutions such as solar panels where practical, RAMO INDUSTRIES PTE LTD aims to contribute towards lower-carbon operations and support broader sustainability and decarbonization goals within the construction industry.

The Company recognizes that sustainability is an ongoing journey that requires continuous improvement, innovation, and collaboration among employees, clients, consultants, subcontractors, suppliers, and stakeholders. RAMO INDUSTRIES PTE LTD will continue to review and strengthen its sustainability initiatives, identify opportunities to improve environmental performance, and enhance awareness of climate-related matters across its operations.



Moving forward, RAMO INDUSTRIES PTE LTD remains committed to promoting environmental responsibility, operational excellence, and sustainable development while supporting long-term business resilience and creating value for its stakeholders and the wider community. Through responsible construction and engineering practices, the Company aims to contribute positively towards a more sustainable and climate-resilient future.

RAMO